



### Packing

- 1 x PANGU Tank
- 1 x KBOX Smart Mod
- 1 x PGOCC (SUS316L) 0.50hm
- 1 x USB Cable
- 1 x Manual

### PANGU Tank Specification

- Diameter: 22mm
- Length: 35mm  
(exclude drip tip and 510 thread)
- Weight: 50g
- Capacity: 3.5mL
- Replacement Coil: PGOCC (NiCr) 1.5 Ohm  
PGOCC (SUS316L) 0.5 Ohm  
for TC mode.
- Mod connection: 510 thread
- Drip tip: POM
- Replaceable pyrex glass

### KBOX Smart Mod Specification

- Height: 63mm
- Length: 44mm
- Width: 23mm
- Weight: 150g

### Product feature

- Material: Zinc alloy
- Color: Black/White/Silver
- Display: 5 LED indicators
- Connection: Spring loaded 510

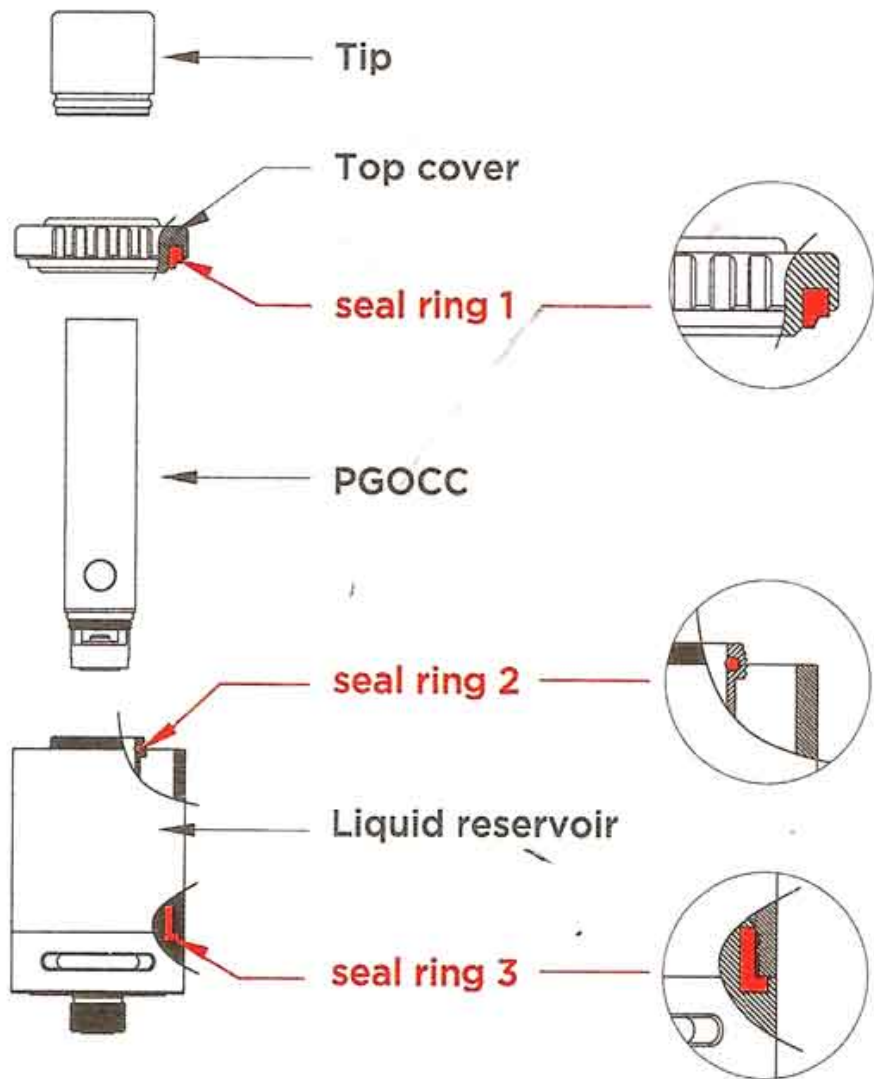
### Function

- Battery capacity: 203050/3000mAh
- Resistance:  $\geq 0.15\Omega$
- Charging: Micro USB charge port,  
DC 5V / 1000mAh
- Battery level: 5 LEDs show battery level

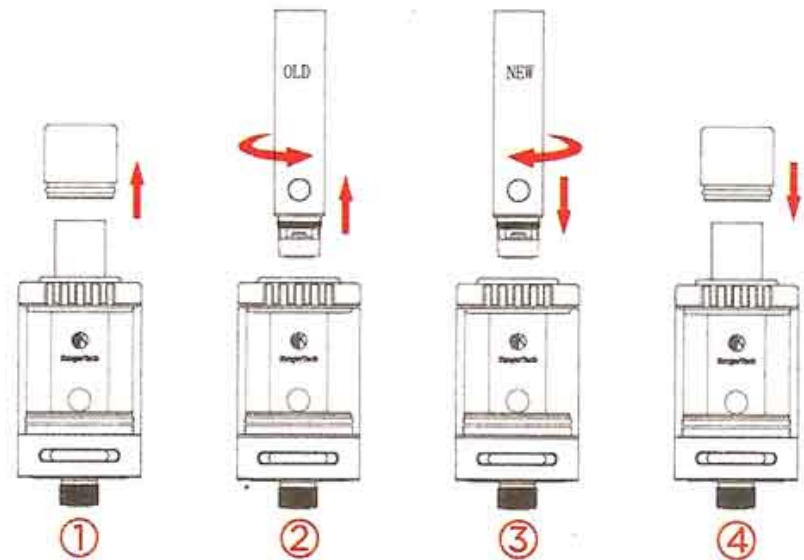
### Feature

PANGU comes with the features of replacing the coil without getting your hands dirty. End user can adjust the juice holes channel and the battery wattage to achieve their best

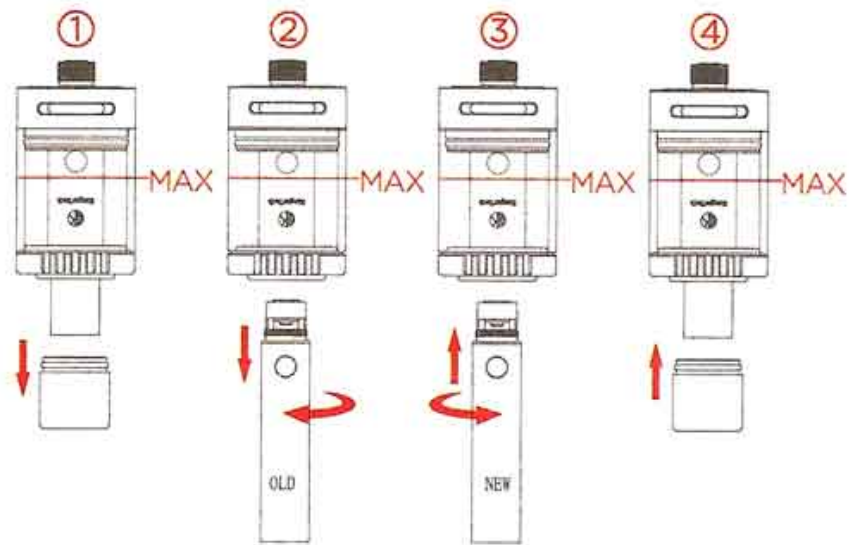
vaping experience. In addition, most of the condense droplet is removed by the new design.



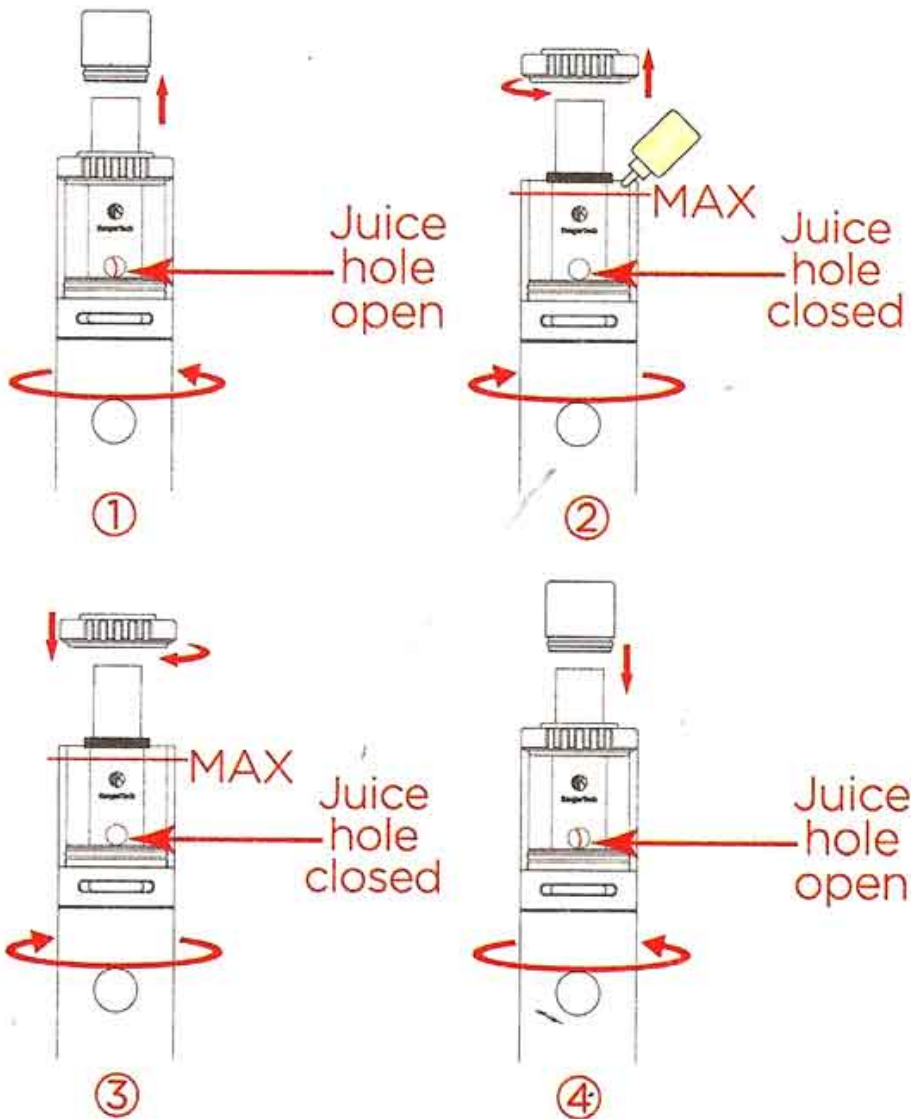
### Replace coil with empty tank



### Replace coil with filled tank



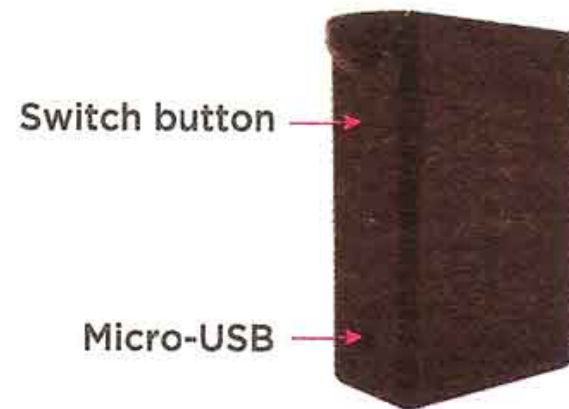
## Filling tank



**Ensure to close the juice holes before filling juice, close the top cover immediately.**

## Remarks

End user may close the juice holes when not using for a period of time or in transit. Prime the coil for 30 seconds before vaping. The information contained in this manual is subject to change without notice.



## KBOX Smart operation:

1. LED lights when press the fire button, and atomizer vapes; LED lights off when release the fire button, and atomizer stops vaping.
2. 5 speedy clicks to switch on/off the battery.
3. LED will flash 3 times when atomizer resistance value is less than  $0.15\Omega$  or short circuit.
4. LED will flash 15 times and stop function when battery is drained out, user needs to charge the battery.



5. LED lights while charging, all 5 LEDs light when fully charged.
6. It will stop functioning automatically when 10 seconds overused.
7. Built-in high-capacity battery.
8. LED will flash 6 times and stop functioning when PCB temperature is too high.

**Warnings:**

1. Do not charge the device outdoors or near water.
2. Do not use this device for anything other than vaping.
3. Disassemble the device will invalidate your warranty.
4. Do not swallow the e-liquid.
5. Do not look into the drip tip while vaping to prevent juice from spitting in eyes.
6. Do not use the device while driving.
7. Do not dispose battery to fire or use it in extreme temperature.
8. This is not designed to be a smoking cessation device.
9. Keep all components away from children and pets.
10. Suitable temperature in using is 5-45 degree.

11. Use the provided tank and battery as a kit and do not use with other tank or battery separately.
12. This device is designed for adults. It should not be used by children under the age of their local smoking or vaping laws, women who are pregnant, or those suffering from illness that could be worsened by the use of this product.
13. Switch off the device when put into your pocket to prevent accidental firing.
14. If you have an adverse reaction in the use of this product, stop using it immediately and seek medical assistance.
15. This device contains no user serviceable parts. It should be repaired by qualified personal only.
16. KangerTech takes no responsibility for damage to person or property through improper use of this product.
17. KangerTech will not warrant this product due to improper use or damage caused by the user.
18. KangerTech will not be responsible for any damages or injuries caused by using a substandard battery. End users must certify their batteries before plugging them into a Kanger device.