



SUBVOD-C™ Kit

This kit includes:

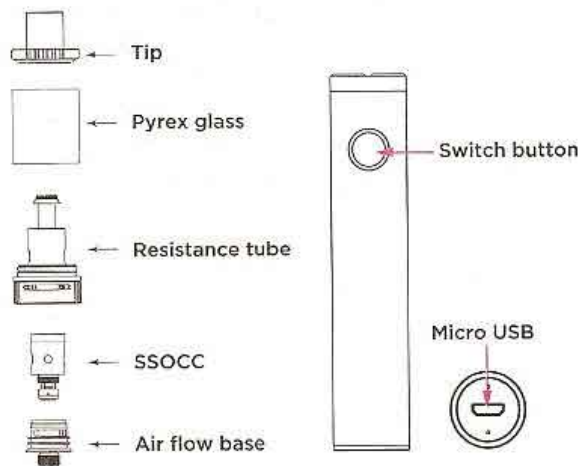
1. Protank 6 x 1
2. SUBVOD battery x 1
3. SSOCC (SS 0.5 Ohm) x 1
4. Micro USB cable x 1
5. Manual x 1

Protank 6 Specification:

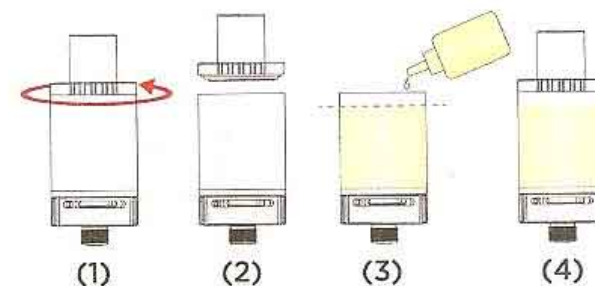
Diameter: 18.5mm
Length: 40mm (body)
Weight: 35g
Capacity: 2.8mL for SSOCC
Connection: 510 thread
Adjustable juice hole size
Replaceable Pyrex glass
Symmetric Air Flow holes

SUBVOD battery

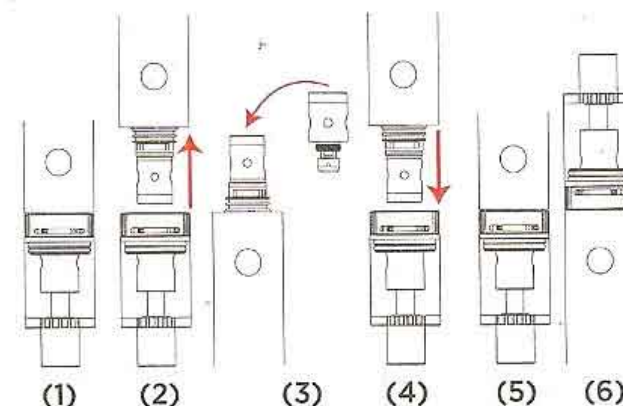
Length: 90mm
Diameter: 18.5mm
Weight: 57g
Output voltage: 3.7V
Capacity: 1300mAH
Coil resistance: $\geq 0.4 \text{ Ohm}$
Charging: micro USB 5V / 500mA
Connection: 510 thread
Protection: short circuit, over charge and overuse protection



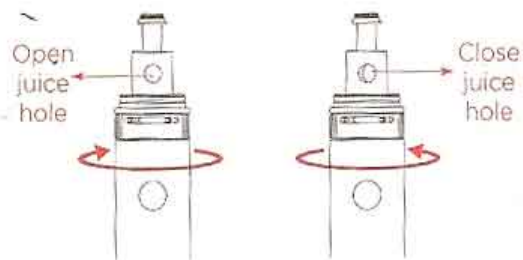
Juice filling



SSOCC head installation



Adjusting juice hole



Remarks

Protank 6 installs the SSOCC.

To disassemble/assemble the tank, hold airflow base and tip connector only. Do not hold the Pyrex glass, which may break the glass, and tip connector will be loose and cause leakage.

The information contained in this manual is subject to change without notice.

Caution

SSOCC must not be "Dry Burned", user needs to ensure that the SSOCC is soaked with E-Juice before firing (input power).

For new SSOCC head, fill the E-juice into the Protank 6, wait for 30 seconds for the cotton to saturate with juice before firing.

Battery Function:

1. 5 Speedy clicks on the button to switch on/off the battery.
2. When the battery is on, press the button to vape.
3. When the atomizer resistance is less than 0.4 Ohm, press the button, it will not function and the button will flash.
4. Press the button with low battery, it will flash over ten times and user needs to recharge the battery.
5. When press the button over 10 seconds, the overuse protection will be activated, it will stop output and the button will flash.
6. When charged by micro USB cable, the bottom LED will turn red, green when fully charged.

Caution

1. Do not charge the cell outdoors or near water.
2. Do not use this kit for other purposes except only for vaping.
3. Do not try to disassemble the battery or else warranty will be invalid.
4. Do not use a resistance wire value other than what is specified.
5. Do not dispose battery to fire or use it in extreme temperature.

6. Do not use the e-cigarette while driving.
7. Do not swallow the e-liquid.
8. Do not touch or spill the nicotine liquid contained in the cartridge.
9. Do not use the device more frequent or for longer periods than conventional cigarettes. This is not designed to be a smoking cessation device.
10. Keep all components away from children and pets.
11. Choose suitable tank with 510 thread or else it may damage the battery.
12. This product is designed for adults and not by children, women who are pregnant or those suffering from disease that could be worsened by this product.
13. For people with adverse reaction after using this product, it is recommended to use the juice with lower or no nicotine content.
14. Customers need to choose the suitable cell that has safety protection.
15. Improper use of this product may be risky.
16. We will not guarantee products that have been damaged through improper use or intentional damage.